



PROTEUM

DISTRIBUTOR OF MARINE PRODUCTS AND
SERVICES ACROSS UK & IRELAND

proteum.co.uk

Proteum is part of  Group

Proteum is the consolidated marine brand within SC Group, representing and distributing a portfolio of marine products and services across UK and Ireland including Bukh, OXE Diesel, Moteurs Baudouin, Konrad propulsion systems and Steelhead Marine.

Our Marine Service Capabilities & Support Programme

When you're in need of service for your marine engine, you can be assured that we offer a range of quality programmes.

Our fixed price service level agreements will protect your investment, maintain fuel efficiency and engine reliability while helping to keep your vessel in service.

Our service and support:

- Remote diagnostics*
- Fully equipped field service vehicles
- Certified and trained engineers
- Technicians on-call for out-of-country emergencies and service
- Extended warranties
- Fixed price Service Level Agreements (SLAs)

*We are the first marine brand in the country offering smart remote diagnostics. This capability will support an effective preventive maintenance programme, enabling proactive identification of engine defects that can be detected early, ultimately to keep your vessel in the water.

Custom Overhaul Solutions

Comprehensive overhauls at bundled pricing, tailored to your specific application and requirements, using genuine new parts to update and/or restore your marine engine to original performance.

Engine Re-powers

Experienced team of technicians, product support reps and technical communicators help determine the power and engine configuration most suited to your situation and needs, whether replacing a severely damaged engine or upgrading to a newer, more fuel efficient model.

Spare parts Support

Comprehensive spares to support our main line products, plus a range of engines in stock. With worldwide capabilities, we offer a same day dispatch on stock items.

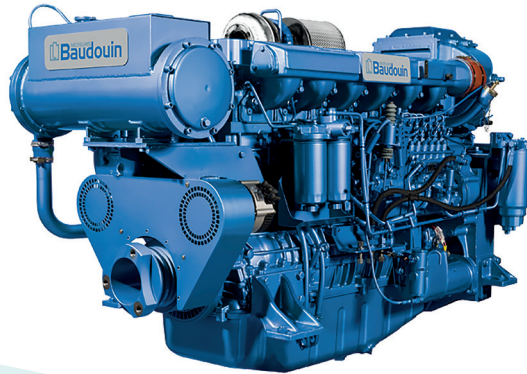


Operation under the SC Group umbrella allows us to grow and develop our joint capabilities while bringing innovative solutions to our customers.

Find out more at proteum.co.uk

MOTEURS Baudouin

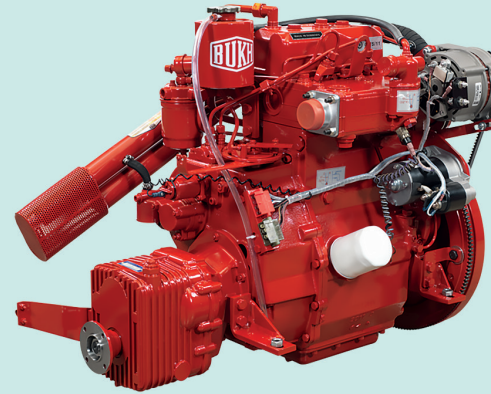
Moteurs Baudouin in 2018 celebrated their 100th anniversary. They manufacture an unparalleled range of marine diesel engines, marine generators and auxiliary engines specifically targeted at the demanding commercial marine and fishing sectors. Moteurs Baudouin continue to develop new products that offer exceptional reliability, fuel efficiency and low through life costs.



OXE DIESEL

OXE (150hp-300hp) is the world's first high performance diesel outboard, setting new standards for durability, fuel-efficiency and low emissions for an outboard engine. The engine is mounted horizontally, eliminating bevel gears and transfer shafts by utilising innovative belt technology which allows for a high torque transfer.

The OXE Diesel Outboard fulfils the NATO "single-fuel" directive and is an ideal solution for naval, military, rescue and commercial applications.



With more than 100 years' of experience, BUKH A/S is one of the world's leading OEM manufacturers of marine diesel engines for lifeboats, fast rescue boats and work boats. They are dedicated to producing quality SOLAS compliant engines as safety at sea is their number one priority.

Proteum is the official UK & Ireland Distributor for BUKH SOLAS marine diesel engines, genuine OEM spares and technical support to designers, builders, operators and owners.

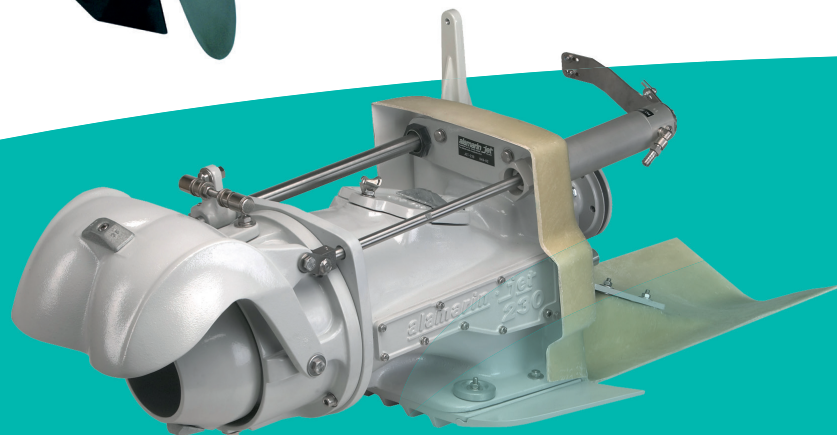
The V8 (350hp-550hp) is now part of the BUKH engine range, and is one of the most durable and lightweight commercial engines on the market. These engines offer the best power density in class and are ideal for performance orientated requirements.





Konrad

Konrad Marine designs and manufactures stern drives for commercial, military, recreational and high performance boats. Since 1991, Konrad stern drives have been hard at work worldwide, with proven reliability, strength and performance. They are the hardest working, longest lasting, toughest stern drives ever made.



alamarin-jet

Alamarin water jet propulsion units are used by various authorities including the coast guard, police, customs and military. Civilian users also value the benefits of the water jet propulsion compared to outboard engines and sterndrives. Alamarin-Jet Oy has manufactured the units since 1976 in Alahärmä, Finland.

Barracuda

First diesel JetSki

The BARRACUDA 140-TDi is the first worldwide long range diesel powered and fuel efficient JetSki, designed for Governmental and professional high demanding tasks. The capabilities of the Barracuda are unmatched; it can push and tow other crafts; has a low centre of gravity; seats up to four operators; has a removable waterproof engine cover for easy access and a quiet driveline.



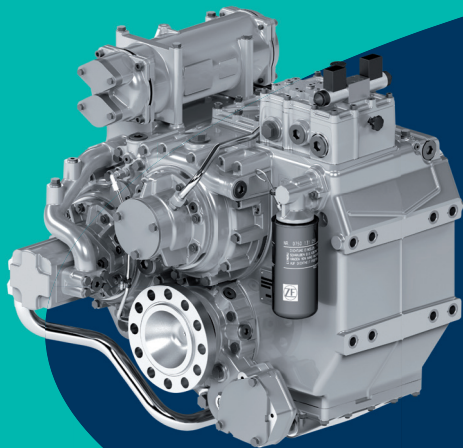
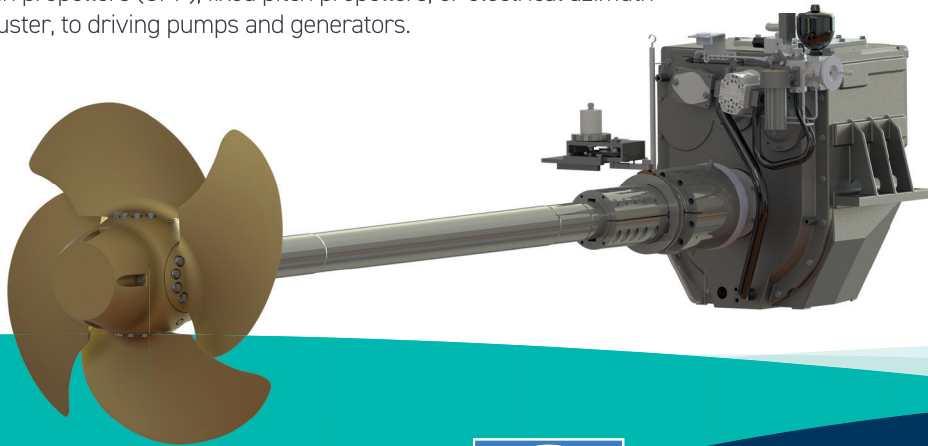
★★★★★ indel B

Indel B is a world renowned Fridge manufacturer producing a wide range of 12v and 24v Cruise Refrigerators ideally suited for the car, campervan, caravan and motorhome market.

Using only high quality materials and incorporating a reliable Secop (formally Danfoss) compressors Indel B Fridges are designed to last. They are used the world over in demanding situations where reliability and performance are essential considerations.

Masson Marine products equip all kinds of marine vessels in commercial work applications. Power ranges from 370 kW to 3 700 kW, with reduction ratios as high as 14.1, and propeller diameters up to 5 meters.

Masson Marine is the comprehensive solution for your marine propulsion system. From propulsion of the ship itself, controllable pitch propellers (CPP), fixed pitch propellers, or electrical azimuth thruster, to driving pumps and generators.



ZF Marine offers propulsion systems and component systems for vessels including Motor Yachts, Defence Craft, High Speed Ferries and Commercial vessels in a power range from 10 to 14000kW.

The product portfolio includes a range of transmissions, Propellers, POD Drive Systems, Steering Systems and CANbus compatible, Electronic Control Systems, Azimuth Thrusters, Tunnel Thrusters and Sail Drives.

In 1996, Glendinning introduced its first electronic engine control system to the marine industry. From their first automatic, integrated mechanical backup system to today's integrated control of an engine's drive unit, Glendinning have proven their ability to bring innovative ideas to the market.

Thousands of satisfied customers agree, whether you own a pleasure yacht or a work boat (and everything in between), single, twin, or multiple engine applications, inboard, outboard, stern drive, and water jet applications — Complete Controls™ is your best choice for optimum control of your boat's propulsion system.

Glendinning controls are designed with the user in mind. They have thought of everything that today's savvy boater wants in electronic engine controls.



For over 20 years Steelhead Marine has provided the global yacht market with exceptional quality cranes.

A leader in innovation, design and adaptability, Steelhead can satisfy the most demanding situations. Steelhead Marine products are at the forefront of innovation in the global yacht market.



Proteum is part of  **SC Group**

Building on three decades of engineering design success, SC Group has grown to be one of the world's leading companies specialising in the design and development of equipment operating in harsh environments. They have a committed team with the skills, expertise and focus to provide the highest value to their customers with bespoke quality products and services.

Despite a period of considerable growth SC Group has retained its focus as 'an innovative design house'.

This group of companies, including Proteum, has consistently proven to be the place to come for good ideas that can be transferred into the very best products.



 **Supacat**



 **Innovation**







 **BLACKHILL**
ENGINEERING SERVICES LTD.

scgroup-global.com



Proteum | Office 4 & 5 | Firefly Road
Hamble Point Marina | School Lane | Hamble-Le-Rice
Southampton | Hampshire SO31 4NB | United Kingdom

T +44 (0)23 8045 7656

E info@proteum.co.uk

ISO 9001:2008 certified

proteum.co.uk