



PROTEUM

DISTRIBUTOR OF MARINE PRODUCTS
AND SERVICES ACROSS UK & IRELAND

PROTEUM.CO.UK

Proteum is part of  Group

Proteum is the consolidated marine brand within SC Group, representing and distributing a portfolio of marine products and services across UK and Ireland including Bukh, Marine Diesel Sweden, OXE Diesel, Moteurs Baudouin, Konrad propulsion systems and Steelhead Marine.

OUR MARINE SERVICE CAPABILITIES

When you're in need of service for your marine propulsion engine, you can rest assured knowing quality service is available for your vessel, Proteum offers all levels of service and support:

- Fully equipped field service vehicles
- Certified and trained Engineers
- Technicians available for out-of-country emergencies and service
- Extended warranties available
- Firm pricing for PM & most routine maintenance
- Maintenance & Repair

Operation under the SC Group umbrella allows us to grow and develop our joint capabilities while bringing innovative solutions to our customers.

Find out more at proteum.co.uk

SUPPORT PROGRAMS

Scheduled maintenance to protect your investment, achieve maximum engine life and maintain engine reliability while helping to keep your vessel on the water and your operating costs under control.

- Customer Support Agreements (CSAs)
- Preventive Maintenance (PM) Agreements
- Annual Service Contracts
- Extended Service Coverage (ESC)
- Overhaul Protection Coverage (OPC)

COMPREHENSIVE INSPECTIONS

Regular engine inspections, scheduled oil sampling and planned maintenance procedures – based on operations and maintenance schedules and dealer recommendations – to help predict potential component or engine failures.

CUSTOM OVERHAUL SOLUTIONS

Comprehensive overhauls at bundled pricing, tailored to your specific application and requirements, using genuine new parts to update and/or restore your marine engine to original performance.

ENGINE RE-POWERS

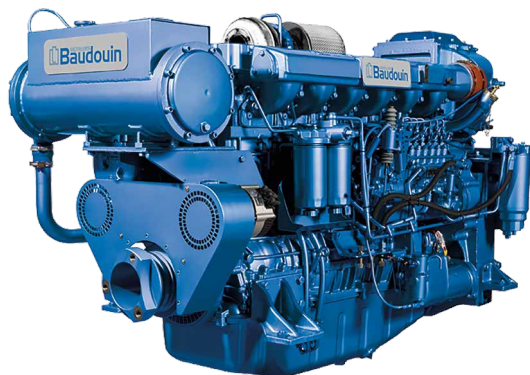
Experienced team of technicians, product support reps and technical communicators help determine the power and engine configuration most suited to your situation and needs, whether replacing a severely damaged engine or upgrading to a newer, higher-horsepower model.

SPARE PARTS SUPPORT

Comprehensive spares supply with a high in stock inventory to support our main line products, we offer a same day despatch on stock items and with worldwide capability.

MOTEURS Baudouin

Moteurs Baudouin manufacture an unparalleled range of marine diesel engines, marine generators and auxiliary engines specifically targeted at the demanding commercial marine and fishing sectors. Now part of the Weichai Power Company, Moteurs Baudouin continue to develop new products that offer exceptional reliability and low through life costs.

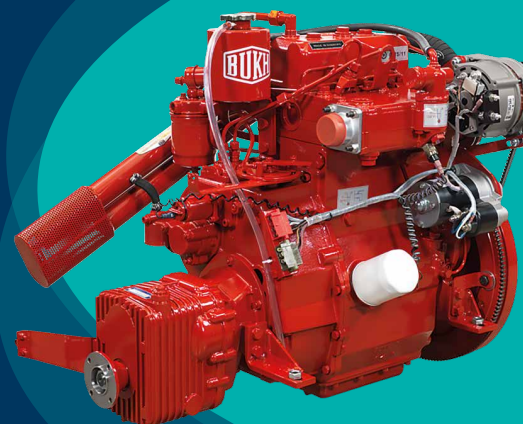


Marine Diesel Sweden developed the first true direct replacement diesel for petrol V8 marine I/O or inboard engines in 1997. This provided one of the most durable yet lightweight commercial engines on the market. These engines offer the best power density in class and are ideal for performance orientated requirements.



OXE is the world's first high performance diesel outboard, setting new standards for durability, fuel-efficiency and low emissions for an outboard engine. The engine is mounted horizontally, eliminating bevel gears and transfer shafts by utilising innovative belt technology which allows for a high torque transfer.

The OXE Diesel Outboard fulfils the NATO "single-fuel" directive and is an ideal solution for naval, military, rescue and commercial applications.



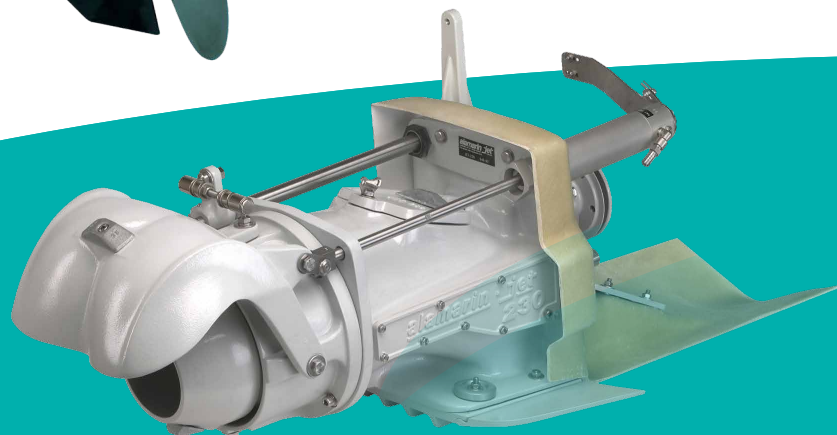
With more than 100 years' of experience, BUKH A/S is one of the world's leading OEM manufacturers of marine diesel engines for lifeboats, fast rescue boats and work boats. They are dedicated to producing quality SOLAS compliant engines as safety at sea is their number one priority.

Proteum is the official UK & Ireland Distributor for BUKH SOLAS marine diesel engines, genuine OEM spares and technical support to designers, builders, operators and owners.



Konrad

Konrad Marine designs and manufactures stern drives for commercial, military, recreational and high performance boats. Since 1991, Konrad stern drives have been hard at work worldwide, with proven reliability, strength and performance. They are the hardest working, longest lasting, toughest stern drives/out drives ever made.



alamarin-jet

Alamarin water jet propulsion units are used by various authorities including the coast guard, police, customs and military. Civilian users also value the benefits of the water jet propulsion compared to outboard engines and sterndrives. Alamarin-Jet Oy has manufactured the units since 1976 in Alahärmä, Finland.

The RescueRunner is a unique rescue unit that builds on techniques used worldwide in beach and surf rescue with a Personal Rescue Craft, PWC, fitted with a rescue sled – but the RescueRunner takes them further by combining them in one boat while adding purposeful design and the ruggedness needed to operate in the roughest environments.



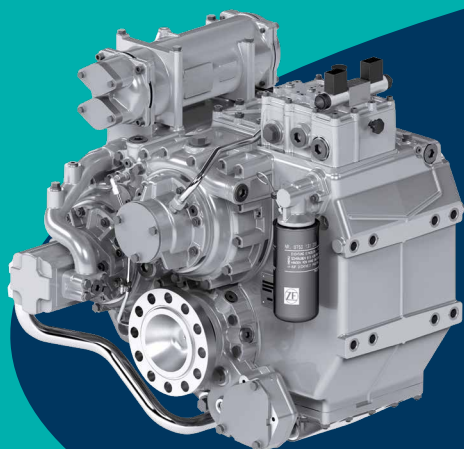
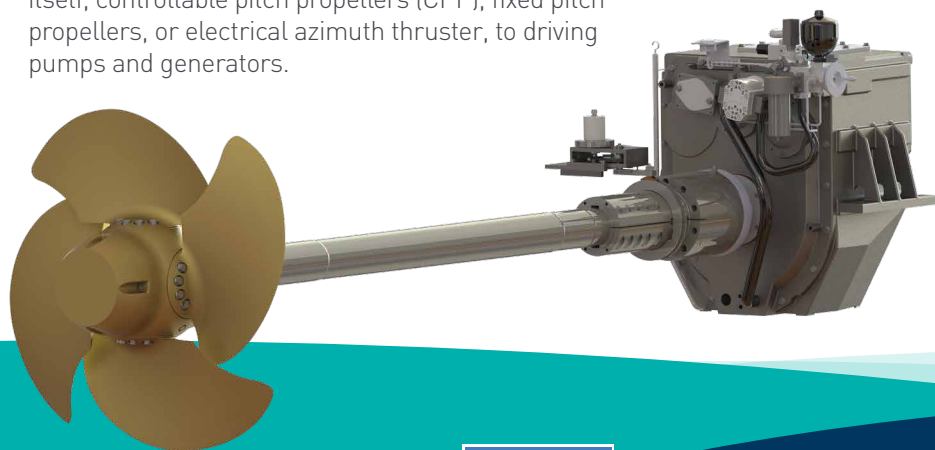
Indel B is a world renowned Fridge manufacturer producing a wide range of 12v and 24v Cruise Refrigerators ideally suited for the car, campervan, caravan and motorhome market.

Using only high quality materials and incorporating a reliable Secop (formerly Danfoss) compressors Indel B Fridges are designed to last. They are used the world over in demanding situations where reliability and performance are essential considerations.



Masson Marine products equip all kinds of marine vessels in commercial work applications. Power ranges from 370 kW to 3 700 kW, with reduction ratios as high as 14.1, and propeller diameters up to 5 meters.

Masson Marine is the comprehensive solution for your marine propulsion system. From propulsion of the ship itself, controllable pitch propellers (CPP), fixed pitch propellers, or electrical azimuth thruster, to driving pumps and generators.

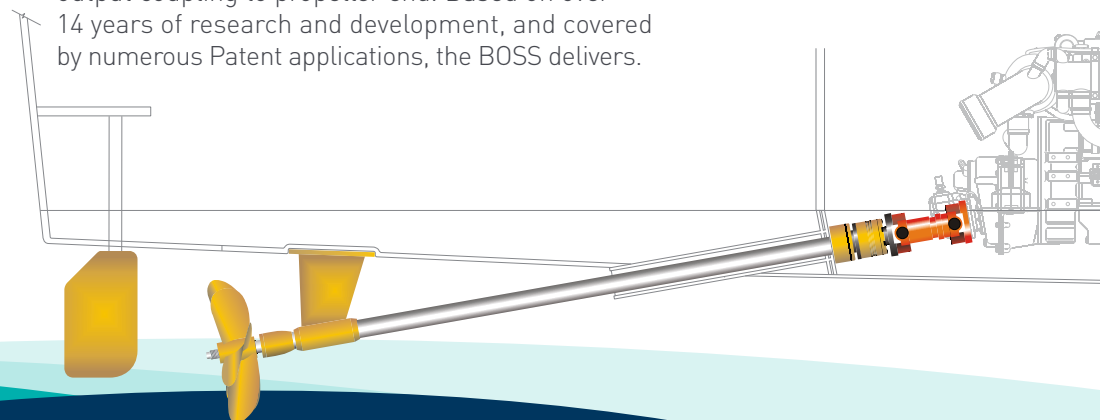


ZF Marine offers propulsion systems and component systems for vessels including Motor Yachts, Defence Craft, High Speed Ferries and Commercial vessels in a power range from 10 to 14000kW.

The product portfolio includes a range of transmissions, Propellers, POD Drive Systems, Steering Systems and CANbus compatible, Electronic Control Systems, Azimuth Thrusters, Tunnel Thrusters and Sail Drives.

Seatorque is an innovative force in the marine manufacturing industry with an award winning fully enclosed fixed shaft drive system.

The BOSS is a totally enclosed, oil filled, self contained, shaft and thrust bearing assembly, supplied as a complete unit from transmission output coupling to propeller end. Based on over 14 years of research and development, and covered by numerous Patent applications, the BOSS delivers.



For over 20 years Steelhead Marine has provided the global yacht market with exceptional quality cranes.

A leader in innovation, design and adaptability, Steelhead can satisfy the most demanding situations. Steelhead Marine products are at the forefront of innovation in the global yacht market.



Proteum is part of  Group

Building on three decades of engineering design success, SC Group has grown to be one of the world's leading companies specialising in the design and development of equipment operating in harsh environments. They have a committed team with the skills, expertise and focus to provide the highest value to their customers with bespoke quality products and services.

Despite a period of considerable growth SC Group has retained its focus as 'an innovative design house'. This group of companies, including Proteum, has consistently proven to be the place to come for good ideas that can be transferred into the very best products.



 Supacat



 Innovation







 **BLACKHILL**
ENGINEERING SERVICES LTD.

scgroup-global.com

 **PROTEUM**

Proteum | Office 4 & 5 | Firefly Road
Hamble Point Marina | School Lane | Hamble-Le-Rice
Southampton | Hampshire SO31 4NB | United Kingdom

T +44 (0)23 8045 7656

E info@proteum.co.uk

ISO 9001:2008 certified

PROTEUM.CO.UK